

**EMX1 Antibody (C-term)**  
**Affinity Purified Rabbit Polyclonal Antibody (Pab)**  
**Catalog # AP8966b**

**Specification**

---

**EMX1 Antibody (C-term) - Product Information**

Application	WB,E
Primary Accession	<a href="#">Q04741</a>
Other Accession	<a href="#">Q04742</a>
Reactivity	Human, Mouse
Host	Rabbit
Clonality	Polyclonal
Isotype	Rabbit IgG
Antigen Region	228-257

**EMX1 Antibody (C-term) - Additional Information**

**Gene ID** 2016

**Other Names**

Homeobox protein EMX1, Empty spiracles homolog 1, Empty spiracles-like protein 1, EMX1

**Target/Specificity**

This EMX1 antibody is generated from rabbits immunized with a KLH conjugated synthetic peptide between 228-257 amino acids from the C-terminal region of human EMX1.

**Dilution**

WB~~1:1000

E~~Use at an assay dependent concentration.

**Format**

Purified polyclonal antibody supplied in PBS with 0.09% (W/V) sodium azide. This antibody is prepared by Saturated Ammonium Sulfate (SAS) precipitation followed by dialysis against PBS.

**Storage**

Maintain refrigerated at 2-8°C for up to 2 weeks. For long term storage store at -20°C in small aliquots to prevent freeze-thaw cycles.

**Precautions**

EMX1 Antibody (C-term) is for research use only and not for use in diagnostic or therapeutic procedures.

**EMX1 Antibody (C-term) - Protein Information**

**Name** EMX1 ([HGNC:3340](#))

**Function** Transcription factor, which in cooperation with EMX2, acts to generate the boundary between the roof and archipallium in the developing brain. May function in combinations with

OTX1/2 to specify cell fates in the developing central nervous system.

**Cellular Location**

Nucleus {ECO:0000255|PROSITE-ProRule:PRU00108, ECO:0000269|PubMed:20887964}.  
Cytoplasm Note=Might be shuttling between the nucleus and the cytoplasm

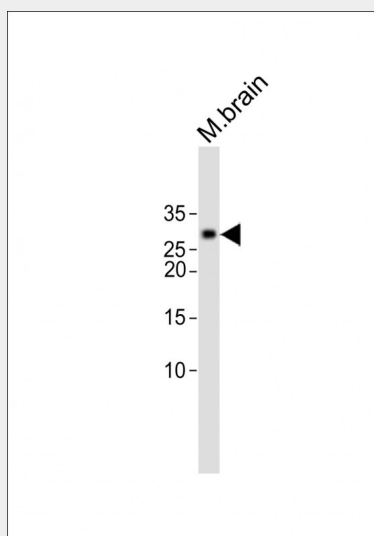
**Tissue Location**

Cerebral cortex.

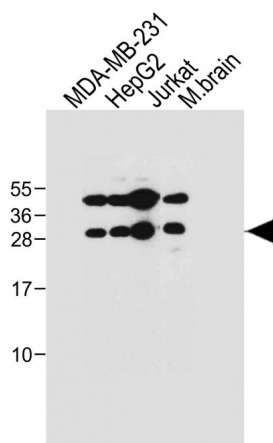
**EMX1 Antibody (C-term) - Protocols**

Provided below are standard protocols that you may find useful for product applications.

- [Western Blot](#)
- [Blocking Peptides](#)
- [Dot Blot](#)
- [Immunohistochemistry](#)
- [Immunofluorescence](#)
- [Immunoprecipitation](#)
- [Flow Cytometry](#)
- [Cell Culture](#)

**EMX1 Antibody (C-term) - Images**

All lanes: Anti-EMX1 Antibody (C-term) at 1:1000 dilution + Mouse brain lysate Lysates/proteins at 20 µg per lane. Secondary: Goat Anti-Rabbit IgG, (H+L), Peroxidase conjugated (ASP1615) at 1/15000 dilution. Observed band size: 28 KDa Blocking/Dilution buffer: 5% NFDM/TBST.



All lanes : Anti-EMX1 Antibody (C-term) at 1:1000 dilution Lane 1: MDA-MB-231 whole cell lysate Lane 2: HepG2 whole cell lysate Lane 3: Jurkat whole cell lysate Lane 4: Mouse brain tissue lysate Lysates/proteins at 20 µg per lane. Secondary Goat Anti-Rabbit IgG, (H+L), Peroxidase conjugated at 1/10000 dilution. Predicted band size : 28 kDa Blocking/Dilution buffer: 5% NFDM/TBST.

#### **EMX1 Antibody (C-term) - Background**

EMX1 is a transcription factor, which in cooperation with EMX2. It acts to generate the boundary between the roof and archipallium in the developing brain. It may function in combinations with OTX1/2 to specify cell fates in the developing central nervous system.

#### **EMX1 Antibody (C-term) - References**

Briata,P., et.al., Mech. Dev. 57 (2), 169-180 (1996)